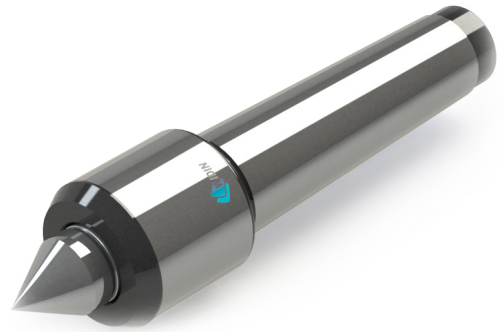
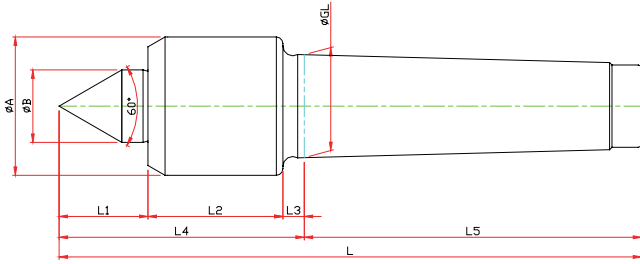


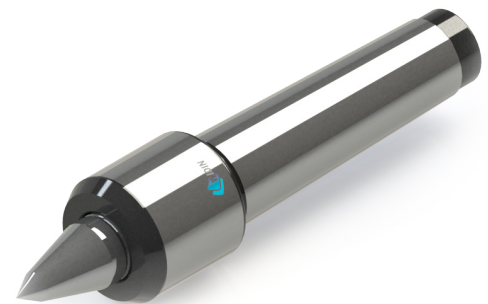
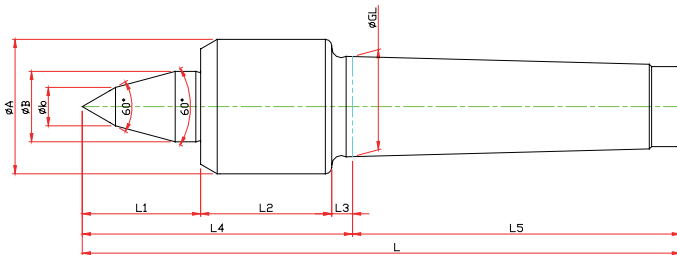
# D50-TYPE



Model	Order Number	Morse Taper	Dimension										Weight MAX.	R.P.M MAX.	Run Out
			GL	A	B	L1	L2	L3	L4	L5	L				
LC-3D50	080350	NO.3	23.825	34	22	21	38	5	64	81	145	400	4800	0.003	
LC-4D50	080450	NO.4	31.267	42	22	27	41	6.5	74.5	102.5	177	800	3800	0.003	
LC-5D50	080550	NO.5	44.399	58	32	35	60	6.5	101.5	129.5	231	1600	3400	0.005	

# D50B-TYPE

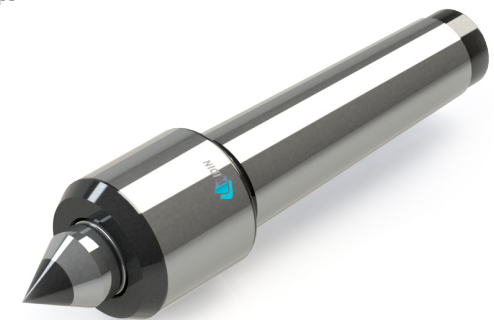
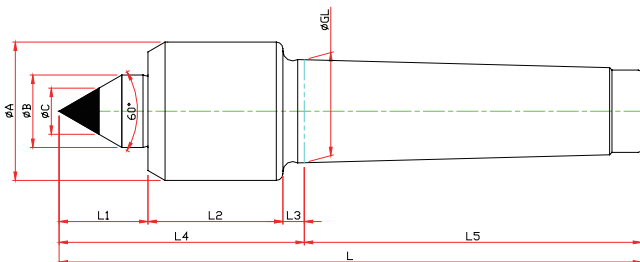
※ SHAFT 확장(바이트 간섭 최소화) SHAFT EXTENSION(Minimize the bite-interference)



Model	Order Number	Morse Taper	Dimension										Weight MAX.	R.P.M MAX.	Run Out
			GL	A	B	b	L1	L2	L3	L4	L5	L			
LC-3D50B	082350	NO.3	23.825	34	22	10	25	38	5	72	81	153	400	4800	0.003
LC-4D50B	082350	NO.4	31.267	42	22	12	36	41	6.5	83.5	102.5	186.5	800	3800	0.003
LC-5D50B	082350	NO.5	44.399	58	32	16	53	60	6.5	119.5	129.5	249	1600	3400	0.005

# D50C-TYPE

※ 초경 타입 Carbide Type



Model	Order Number	Morse Taper	Dimension										Weight MAX.	R.P.M MAX.	Run Out
			GL	A	B	L1	L2	L3	L4	L5	C	L			
LC-3D50C	081350	NO.3	23.825	34	22	21	38	5	64	81	10	145	400	4800	0.003
LC-4D50C	081450	NO.4	31.267	42	22	27	41	6.5	74.5	102.5	14	177	800	3800	0.003
LC-5D50C	081550	NO.5	44.399	58	32	60	60	6.5	101.5	129.5	18	231	1600	3400	0.005